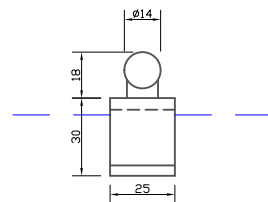
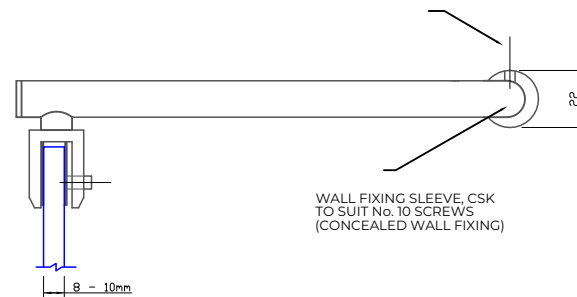


FRONT VIEW ON TIE BAR



3 No. GRUB SCREWS FOR TIE BAR CONNECTION/ADJUSTMENT.

SIDE VIEW ON TIE BAR



NOTES/SPECIFICATION:

- ALL TIE BAR COMPONENTS IN CHROME PLATED BRASS.
- PRODUCT SUITABLE FOR 8 TO 10mm TOUGHENED GLASS PANES.
- TIE BAR SUPPLIED COMPLETE WITH:-
- 1) 2 No. x 1mm TRANSLUCENT CLAMPING WASHERS.
 - 2) 3 No. STAINLESS STEEL HEX SOCKET GRUB SCREWS.
 - 3) 1 No. FLAT HEAD, RUBBER TIPPED GRUB SCREW.
 - 4) 1 No. HEX SOCKET ALLEN KEY TO SUIT
 - 5) 1 No. 10 x 40mm POSI DRIVE SCREW AND PLASTIC PLUG
- (NOTE CUSTOMER TO PROVIDE ALTERNATIVE FIXINGS WHERE REQUIRED)

PRODUCT REF:	SH/APH/T03_AD
DESCRIPTION:	DIMENSIONED ELEVATIONS AND GLASS PREP DETAILS
DRAWING REF:	SH/APH/T03_AD - 001A