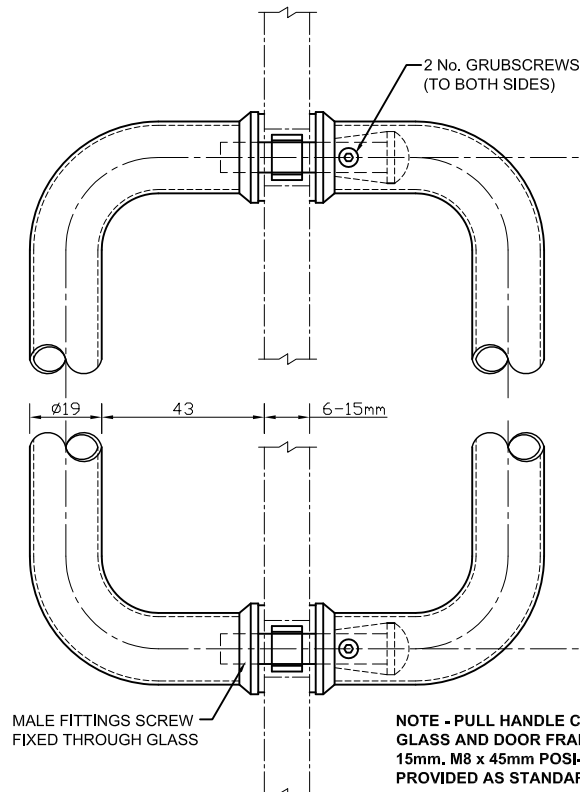


EXAMPLE VIEWS ON TYPICAL DOOR

SIDE VIEW ON HANDLE

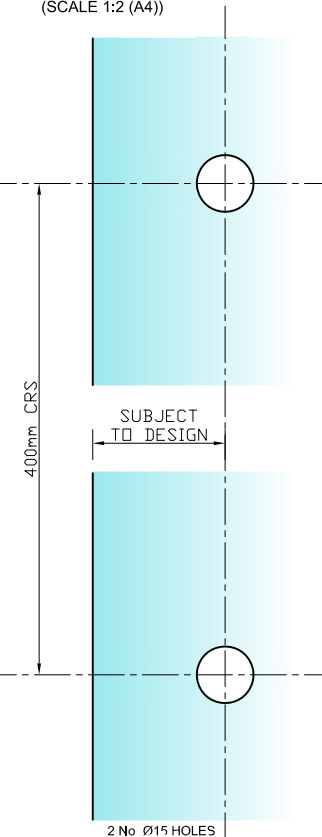
(SCALE 1:2 (A4))



NOTE - PULL HANDLE CAN BE UTILISED ON GLASS AND DOOR FRAMES THICKER THAN 15mm. M8 x 45mm POSI-PAN SCREW PROVIDED AS STANDARD FOR 15mm MAX.

REQUIRED GLASS PREP

(SCALE 1:2 (A4))



NOTES/SPECIFICATION:

PULL HANDLE COMPONENTS SUPPLIED IN POLISHED STAINLESS STEEL.

PULL HANDLE SUITABLE FOR 6 TO 15mm GLASS PANES (WITH STANDARD SCREWS PROVIDED). CAN ALSO BE UTILISED ON THICKER GLASS AND DOOR FRAMES, HOWEVER LONGER M8 POSI-PAN FIXINGS WILL BE REQUIRED (PROVIDED BY OTHERS).

PRODUCT REF:	SH/GGA/P05
DESCRIPTION:	DIMENSIONED ELEVATIONS AND PRODUCT DETAILS
DRAWING REF:	SH/GGA/P05 - 001